

Palace Theatre
61 Atlantic Street Stamford, Connecticut 06901
www.palacestamford.org

Loading Door is located **behind** 131 Summer Street, Stamford, CT 06901
NO Loading Dock
Production Contacts
Randy Thomas---Director of Production and Facilities---203-517-3429 office
rthomas@palacestamford.org

Union Labor
Jim Shea

IATSE Local 74
Business Rep.

P.O. Box 9075 New Haven, CT 06532
phone 203 710-5089

Stage Specifications*

- * All Measurements and inventory are generally assumed accurate.
Responsibility of accuracy is that of Designer / Production.

Seating Capacity

854 Orchestra - 788 Balcony – 1642 Total.
Theatre was built in 1927, Last renovations 1997 (stage), 2004 (lobby).

Load in Area

Door is 10'-6" h x 8'-4"w X 13'-6" diagonal, street level load in, no loading dock
House has no loading ramps or forklift.

Parking

There is NO Parking at the Palace. It is strictly Load-In/Out. Please coordinate all arrangements through the Production Office **NOTE: Absolutely NO VEHICLES may remain at the loading area. All trucks, buses, limos, vans, etc., must unload and depart. Nearby parking can be arranged through production manager.**

Production Offices

One production office and dressing rooms are located underneath the stage.
There are stairs on both sides of the stage and one elevator upstage left.
WiFi is available in the dressing room and production areas.

Storage & Rehearsal Area

The lobby can be used for rehearsals.

Train Station

Metro North is SIX blocks from theatre, leave NYC from Grand Central to Stamford Station.

Shipping and Receiving

All parcels should be sent to Stamford Center for the Arts, 61 Atlantic Street, Stamford, CT 06901.

Theatre Specifications

Carpenter Specifications

Stage floor is black masonite over plywood.

Can anchor into floor.

No traps in stage floor.

Proscenium. 46'-0"w x 25'-0" h

Deck to Grid. 59'-0"

0'-0" to back wall. 44'-6" to plaster 43'-6"

Apron edge to back wall. 48'-6"

D.S. edge of pit extension to back wall. 60'-6"

Apron (0'-0" edge of stage). 4'-0"

0'-0" to D.S edge of pit extension. 16'-0"

Stage left wing (measured from Prosc.) 20'-0"

Stage right wing. (measured from Prosc.) 22'-0"

Center to stage left wall. 41'-9"

Center to stage right wall. 46'-3"

Proscenium to FOH mix Position 86'

Back Stage Left to FOH mix Position Cable Run 120'

Balcony rail to proscenium 42'-3"

Orchestra Pit

Is 48'-0"w x 20'-0"d and is 8' below stage level. The pit is hydraulic and has removable seats.

House Pianos

One Steinway B- 6'-10" Piano black.

One Yamaha upright Black

Fly system

Counter weight system is single purchase.

46 line sets at 6" to 12" o.c. with 5 lift lines per set.

Weight 32k lbs. available.

House pipes are 52' long with 50 feet of travel from 4' above deck.

Arbors have 1k lbs. capacity, Arbors are 8'- 0" tall.

Grid is clear of obstructions (except "Dead Spot") see lineset schedule.

Locking rail is on the floor, stage right.

Enough hemp for 20 cable picks and spot lines.

One stacking motor USL

NO LINESETS from 23'-6" to 28'-0" from Plaster line. This is storage for orchestra shell back wall.

House Soft Goods

House Curtain Red velour, Guillotine style.

Six pair of legs & Six borders (soft).

Two black out drops - one in fullness and one flat.

Black scrim & blue seamless cyc 29' x 52'

"Opera Drop" 29' x 43'

Wardrobe

Located in Basement, access through stairs on either side of stage or one elevator upstage left.

Two washing machines, two dryers, two ironing boards, two steamers & four wardrobe racks.

Dressing Rooms

Located in the basement, access through stairs on either side of stage or one elevator upstage left.

Two star dressing rooms that can fit two people includes toilet, shower & phone.

Two large chorus rooms: one holds thirty-two people, the other one holds thirty people - Both have toilets & showers.

Electric Specifications

Stage power is 2 @ 400-amp service - 3phase - 120/208 volt - 50' from DSL.

Lighting Power distro has cam-locks (ground and neutral reversed) , please bring turnarounds if you need them

Light board is an ETC ION 2000 or Grand MA 3 Lite

288 Dimmers @ 2.4k

Light board and Dimmers are DMX compatible.

Light board is located in House, orchestra right.

There are seven electric pipes on stage.

House Rep. plot hung, can be moved and/or stripped.

Booms & floor stands are available.

Boom drop circuits available 12 on each side of stage.

No other Multicable or breakins, or break outs are available.

Small inventory of 2 pin and ground jumpers, and twofers are available.

House lights and partial work lights located Front of House.

Hanging positions in Front of House

Rear Balcony 90'-0" from Plaster line at Centerline, 36 Circuits.

Far Right & Left Balcony Booms 55'-0" from Plaster line at Centerline, 6 Circuits each side

Right & Left Box Booms 25'-0" from Plaster line at Centerline, 12 Circuits each side

Balcony Rail 40' ft throw from Plaster Line

Truss 3'-0" D.S. of Plaster line at Centerline, 24 Circuits

Stamford Center for the Arts spare lighting units inventory January 2024 as follows:

12 Par 64 Cans with various lamps

60 @ Altman 6 x 9

25 @ Altman 6 x 12

10 @ Altman 6 x 16

15 @ Barn Door for 2 K fresnels

8 Martin Rush MH1 Profile

3 Martin Rush MH6 Wash

6 Martin Rush Par 2 Zoom

This is in addition to the units that are used in the house rep hang.

See house rep light plot and other detail information at

[Tech Specs](#) control click to follow link

VIDEO EQUIPMENT

E-Vision 15000 WU Projector 15K

E-vision 1.24-1.78 Lens

E-Vision 0.38 Lens

2 X Crestron 4K Network AV Decoder

Eiki LC-x85 Projector 7000 ANSI Lumens

10.5' x 14' fast fold frame with dual format screen.

24' x 38' perforatd framed front projection screen

100' VGA cable

Tascam BD-MP4K Blu-ray Player

Sound Specifications

Sound power is a 200-amp service –LEX Products 200 AMP power rack with camlock pass through ground an neutral reversed

FOH system

<u>Mixing console</u>	Digico Quantum 338
Processing	2 DBX Driverack 480 Speaker Processor
Amplifiers	1 Crown IT5000HD for front fills
Speakers	22 JBL VT4888DPDA Powered Line Array. Per side 4 box stack 7 flown 6 JBL 4880ADPDA Dual 18" Powered Subwoofer 3 Per side. 4 JBL AC28/26 for front fill 2 EV DeltaMax for box fill 2 JBL VP7212/64DPDA 12" 2 way powered speaker enclosure for fill

Monitor System

Console	Soundcraft Vi6
Speakers	14 JBL VP7212MDP Powered 2 way 12" Monitor 8 JBL SRX 609LA and 4 SRX918S for Side Fill or front fill.

<u>SNAKE</u>	Whirlwind 58NR passive split copper snake 58 channels no returns
--------------	--

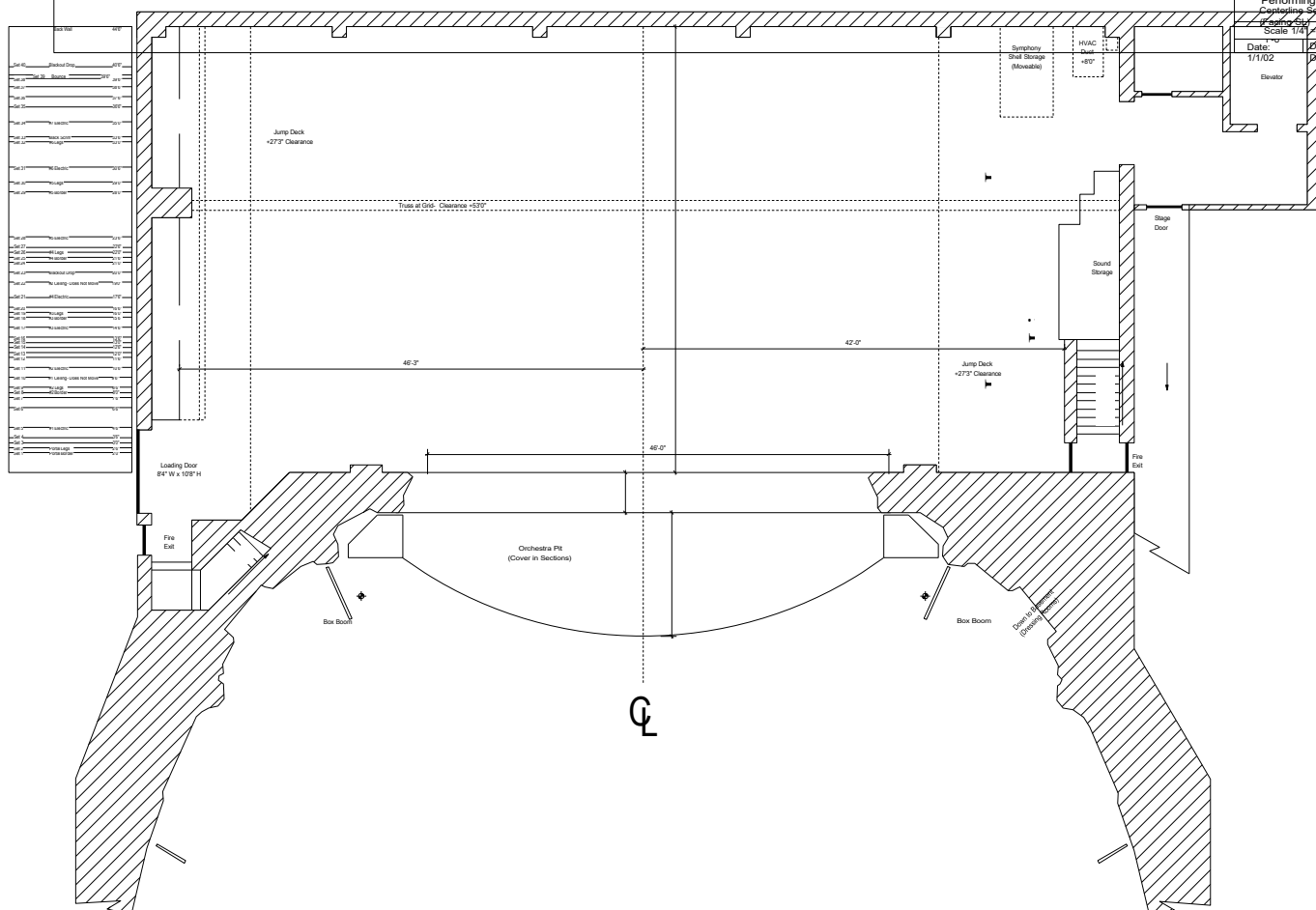
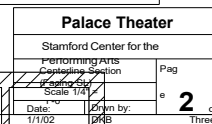
<u>GEAR</u>	12 AKG D5 Handheld vocal mic 1 AKG drum mic kit-1x D 112, 2x C 1000 S and 4x C 518 M, Shure ULXD1-H50 Wireless 1 Shure ULXD4Q-H50 4 channel wireless receiver 4 X ULXD2/SM58-H50 handheld transmitter 2 Shure ULXD1-H50 Body Pack 1 AKG PSU-4000US Antenna PS, HUB-4000IQ, 2-SRA-2W Antennas 2 Shure UA874US Antenna 6 Shure SM 57, 5 Shure SM 58 1 – Beyer M88, 2 – Shure SM 94 2 Shure SM81-LC 2 AKG 414 (matched pair) 6 Whirlwind Passive Direct Boxes 3 Radial Passive DI 3 Radial Active DI 5 - PCC 160's 1 denon dn-c550r dual deck cd player
-------------	--

<u>Communications</u>	1 Soundcraft Ui12 mixer for, program input from Balcony Rail Paging Microphone or FOH output Paging microphones SL &SR
-----------------------	--

<u>Clear Com</u>	CS222 2 channel master station 4 single muff, 4 belt packs 2 biscuits 4 wireless Clearcom "Tempest" belt packs headsets, 1 base station
------------------	--

Infrared	1 sennheiser sl 101 master station, 2 Emitter panel
----------	---

SET #	FROM PL	HOUSE REP USE	SHOW USE	WEIGHT	TRIM	NOTES
1	2'-0"	Portal Border				runs from jump deck
2	2'-6"	Portal Legs				runs from jump deck
3	3'-0"	Empty				
4	3'-6"	Empty				
5	4'-6"	# 1 ELEC				
6	6'-6"	Movie Screen				
7	7'-6"	Border				Does Not Strike
8	8'-0"	# 2 Leg SL				
9	8'-6"	# 2 Leg SR				
10	9'-6"	# 1 Ceiling				Does Not Strike
11	10'-6"	# 2 ELEC				
12	11'-6"	Empty				
13	12'-0"	Empty				
14	12'-6"	Empty				
15	13'-0"	Empty				
16	13'-6"	Empty				
17	14'-6"	# 3 ELEC				
18	15'-0"	Empty				
19	15'-6"	# 3 Border				
20	16'-0"	Empty				
21	16'-6"	# 3 Legs				
22	17'-6"	# 4 ELEC				
23	19'-0"	# 2 Ceiling				Does Not Strike
24	20'-0"	Empty				
25	21'-0"	Midstage Blackout				
26	21'-6"	# 4 Legs				
27	22'-0"	RP SCREEN				
28	22'-6"	Empty				
29	23'-6"	# 5 ELEC				
29.5	26'-9"	Orchestra Shell Wall				Hangs on truss and motors DOES NOT STRIKE
30	28'-0"	# 5 Border				
31	29'-4"	# 5 Legs				
32	30'-0"	Black Scrim				
33	30'-6"	Empty				
34	32'-0"	# 6 ELEC				
35	33'-0"	Empty				
36	33'-6"	Empty				
37	34'-6"	Blackout Drop				
38	35'-0"	# 6 Legs				
39	36'-6"	Border				
40	37'-0"	Cyc				
41	38'-0"	Blackout				
42	38'-6"	Empty				
43	39'-0"	Projector				
44	39'-6"	Blackout				
45	40'-6"	Empty				
46	41'-0"	Empty				



Phone Numbers and other stuff

Palace Theatre Phone Numbers

Stage Door	(203) 517-3408
Visiting Production Office Fax line	(203) 517-3423
House Manager	(203) 517-3407
Box Office	(203) 325-4466

Randy Thomas	Director of Production	(203) 517-3429
--------------	------------------------	----------------

rthomas@palacestamford.org

Walter Lemekha	Theatre Manager	Merch and FOH	(203) 517-3402
----------------	-----------------	---------------	----------------

wlemekha@palacestamford.org

Michael Moran	President and CEO	GM	203 517-3401
---------------	-------------------	----	--------------

mmoran@palacestamford.org

Lenore Heller	Box Office	203 517-3406
---------------	------------	--------------

Lheller@palacestamford.org